



Ramina redesigns Raman

The Thermo Scientific™ Ramina™ Process Analyzer enables real-time, accurate spectral results for process monitoring. Ramina redesigns how Raman spectroscopy brings value to the Process Analytical Technology workflow by focusing on a user-centric experience through its rapid setup, portability and ease of use for upstream and downstream R&D applications.

- **Instant, in-line measurements**

Ramina is built for consistent and continuous analyte monitoring and actively saves data either locally or to a networked archive during the measurement process to minimize the risk of compromising your process optimization.

- **Effortless in-line analysis**

Ramina's customizable BallProbe® and TouchRaman® technology facilitate seamless sampling and a one-touch measurement method even in harsh environments and demanding bioprocessing settings.

- **Customizable solutions**

Ramina is designed to support unique and challenging upstream and downstream applications that require powerful solutions with interchangeable probes and flow cells that can be made to fit customized specifications at your request.

- **Optimized process control**

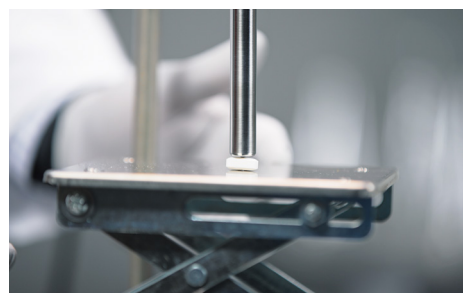
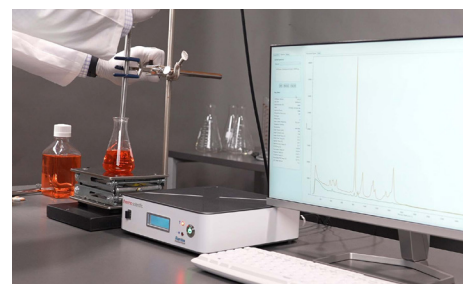
Ramina is sensitive to material integrity and sample changes and enables Research & Development success, supporting higher efficiency during upstream and downstream processes.

- **Expert chemometrics assistance**

Ramina is supported by a team of Thermo Scientific chemometricians and engineers who are available to provide rapid chemometric model building assistance and application consultation. Using your calibration data, our specialists can build your models and provide a comprehensive model build report. Lean on our expertise and spend less time stressing about the math.

- **Versatility, adaptability, repeatability**

Go from unboxing to generating spectral data and results in less than 15 minutes with one-button hardware, stackable build, and factory calibration. Ramina is easy to use and enables dependable, simple-to-execute Raman measurements by all professionals including non-Raman experts.



thermo scientific

Learn more at thermofisher.com/ramina

 **SENTINEL**
PROCESS SYSTEMS, INC

3265 Sunset Lane Hatboro, PA 19040 | 215-675-5700 | sentinelprocess.com